



RTM060M

33 Cells MBB

Mono N-Type/TOPCON Cells

60W

Power output

13.99%

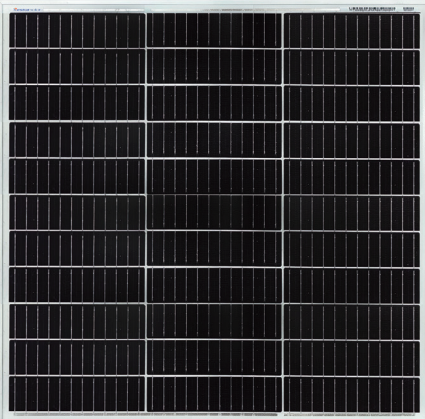
The Highest Efficiency

0~+5W

Tolerance

WWW.RESTARSOLAR.COM

RTM060M is a robust solar module with 33 solar cells. These modules can be used for on-grid solar applications. Our meticulous design and production techniques ensure a high-yield, long-term performance for every module produced. Our rigorous quality control and in-house testing facilities guarantee Restarsolar's modules meet the highest quality standards possible



High module conversion efficiency (up to 13.99%), through superior manufacturing technology



Guaranteed 0~+5W positive power output tolerance ensures high reliability



Anti-reflective, hydrophobic coating improves light absorption and reduces surface dust

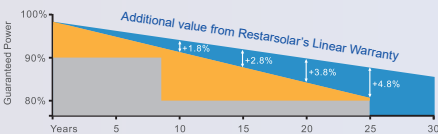


Excellent performance under low light environments (mornings, evenings and cloudy days)



Suitable for harsh environments, such as coasts, deserts and lakes. Withstand high level of wind loads (2400pa) and snow loads (5400pa)

0.5% Annual Degradation over 30 years



Restarsolar's Standard
Common module's Linear
Industry Standard

LINEAR PERFORMANCE WARRANTY

12 Year Product Warranty

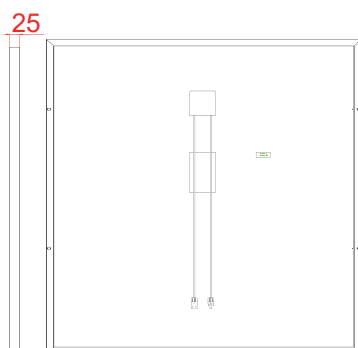
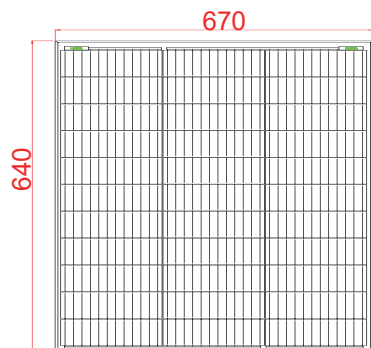
25 Year Linear Power Warranty

Full range of products and certification systems

ISO 9001/14001 TUV PID-FREE CE IEC 61215/61730/61701/62716



Dimension of PV Modules Unit: mm



ELECTRICAL DATA(STC)

Rated Power in Watts-Pmax(Wp)	60W
Open Circuit Voltage-Voc(V)	22.60
Short Circuit Current-Isc(A)	3.43
Maximum Power Voltage-Vmp(V)	18.70
Maximum Power Current-Imp(A)	3.22
Module Efficiency	13.99%

STC: Irradiance 1000 W/m², Cell Temperature 25°C, Air Mass AM1.5 according to EN 60904-3.

ELECTRICAL DATA(NOCT)

Maximum Power-Pmax(Wp)	44.85W
Open Circuit Voltage-Voc (V)	21.18
Short Circuit Current-Isc(A)	2.77
Maximum Power Voltage-Vmp(V)	17.39
Maximum Power Current-Imp(A)	2.58

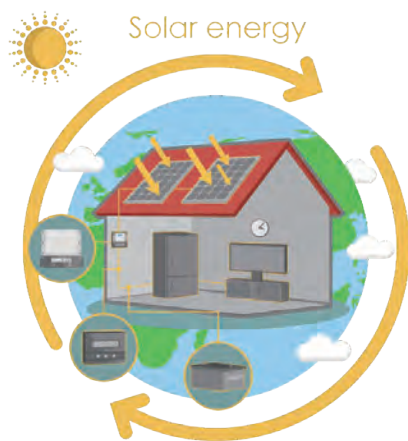
NOCT: Irradiance at 800 W/m², Ambient Temperature 20°C, Wind Speed 1m/s.

MECHANICAL DATA

Solar Cells	Mono-crystalline 210*52.5mm N-Type/TOPCON cells, Multi Bus Bars
Cell Configuration	33 cells(3*11)
Module Dimensions	640*670*25mm
Weight	4.8kg
Front Cover	3.2mm Tempered Glass
J-Box	IP65 or IP67, 3 Diodes
Cable	4mm ² (IEC)/12AWG(UL), 800mm or customized
Connectors	MC4 or MC4 Compatible

TEMPERATURE & MAXIMUM RATINGS

Nominal Operating Cell Temperature(NOCT)	45°C±2°C
Temperature Coefficient of Voc	-0.32%/°C
Temperature Coefficient of Isc	0.05%/°C
Temperature Coefficient of Pmax	-0.39%/°C
Operational Temperature	-40~+85°C
Maximum System Voltage	1000V(IEC)/1000V(UL)
Max Series Fuse Rating	15A
Limiting Reverse Current	15A



Add: No: 30 Yongshun Road, Zhulin Town, Jintan District, Changzhou, Jiangsu Province, China
Tel: +86 512-66292101
E-mail: sales@restarsolar.com
Web: www.restarsolar.com

MADE IN CHINA