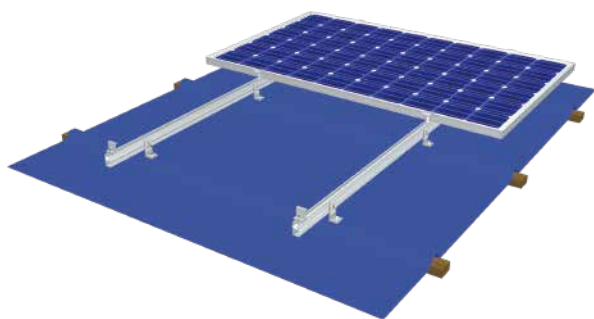


### Overview



### Technical Parameter

System Name	L Feet Kit & Hanger Bolt Kit	Design Standard	AS/NZS 1170, DIN 1055, JIS C8955: 2017,
Installation Site	Pitched Roof		International Building Code IBC 2009,
Foundation	Trapezoidal Roof		California Building Code CBC 2010;
Tilt Angle	0°	Rail	AL6005-T5(Anodized)
Wind Load	60m/s	Fastener	SUS304 & Zinc-Nickel Alloy Electroplated Steel
Snow Load	1.6kN/m <sup>2</sup>	Small Components	AL6005-T5(Anodized)
Applicable Solar Module	Framed or Frameless	Color	Silver or Customized
Panel Layout	Portrait or Landscape	Warranty	10-Year Warranty

Certified by TUV, SGS and qualified consultants in AU, JP, ASEAN, CN, UK, EU, US



28-46 Mid/End Universal Clamp



Rail Splice



### Components Data

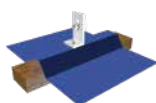
Components	L Feet(black or silver), EPDM Pad, Rail Nut, Spring Washer M8 , Flat Washer M8, Self-tapping Screw M6*80, Hexagon Socket Head Bolt M8*25
Package	40sets/small carton, 160sets/large carton



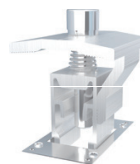
L Feet Kit



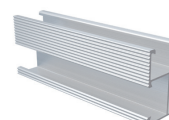
Installation Picture



Installation Picture



28-46 Universal End /Mid Clamp Kit(MA)



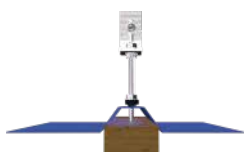
MA Rail H48

### Components Data

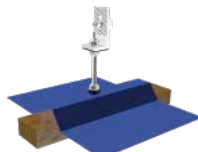
Components	L Feet, Hanger Bolt M10*200, EPDM Pad M10, Washer M8, Rail Nut, Conical Washer M8, Hexagon Socket Head Bolt M8*25
Package	20sets/small carton, 80sets/large carton



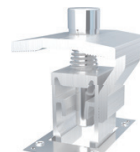
Hanger Bolt Kit



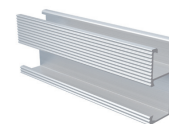
Installation Picture



Installation Picture



28-46 Universal End /Mid Clamp Kit(MA)



MA Rail H48